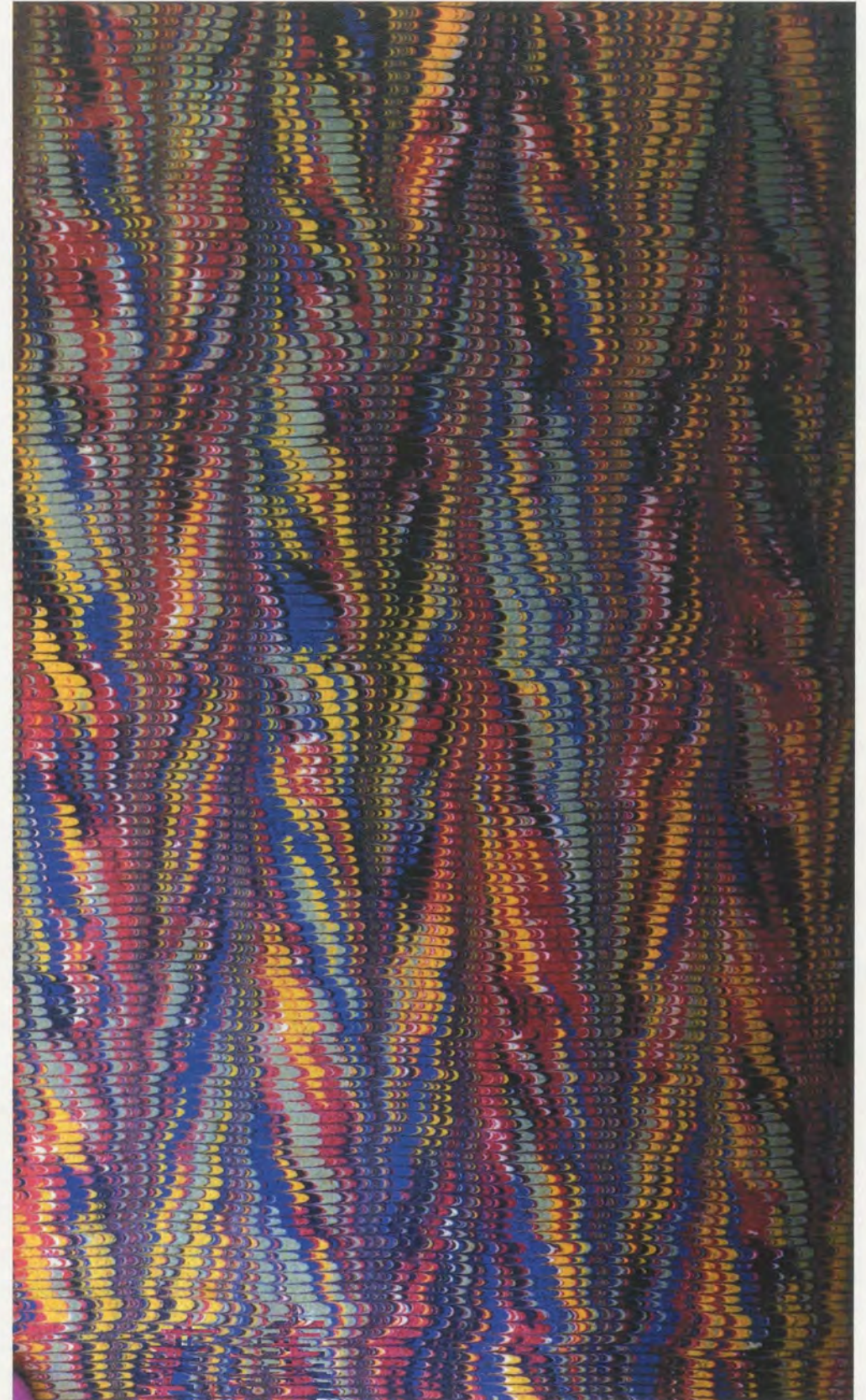
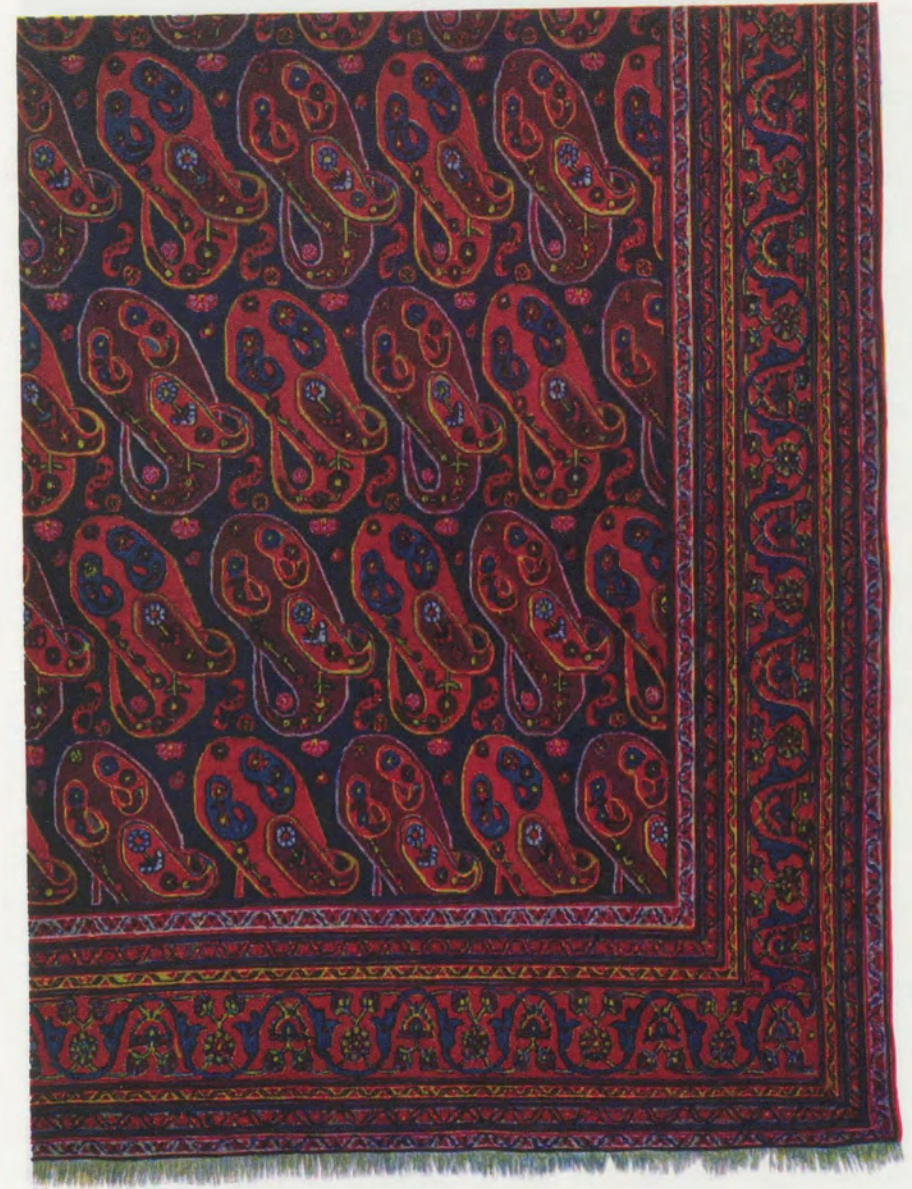
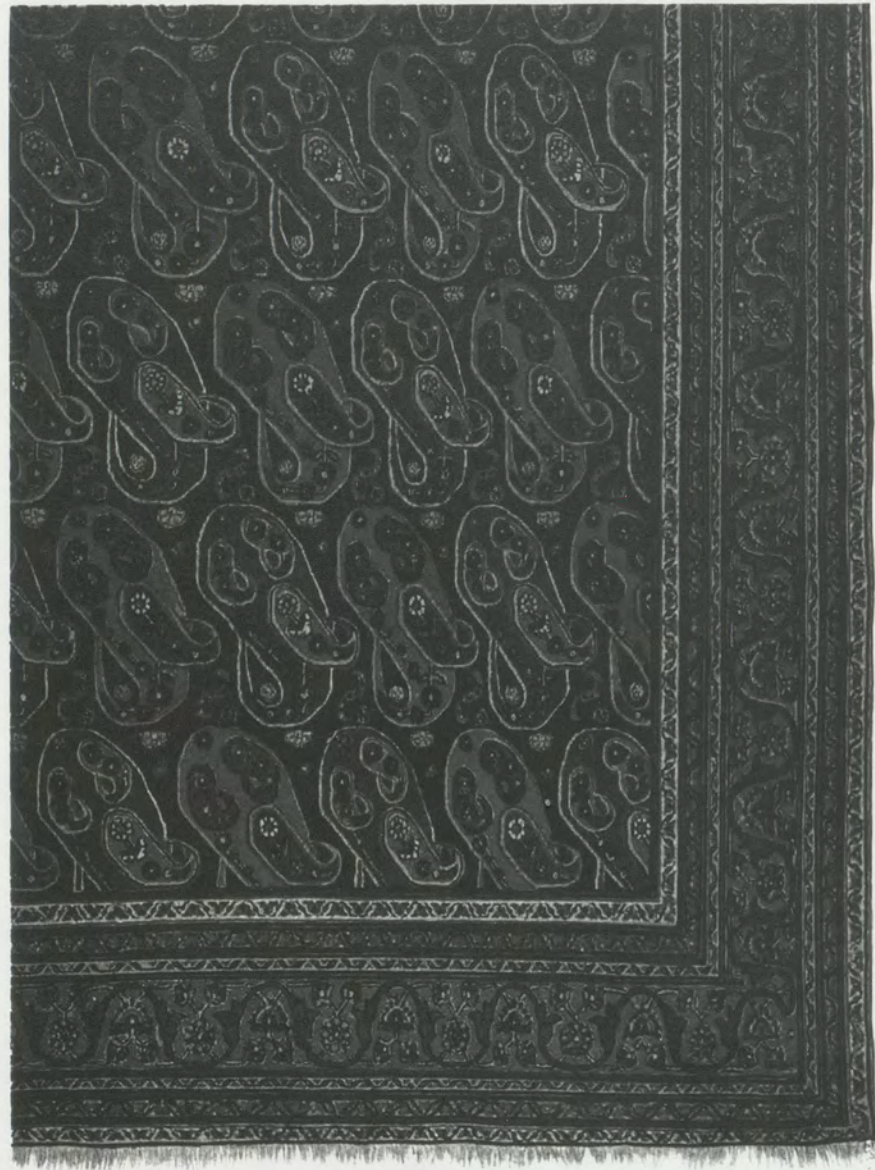
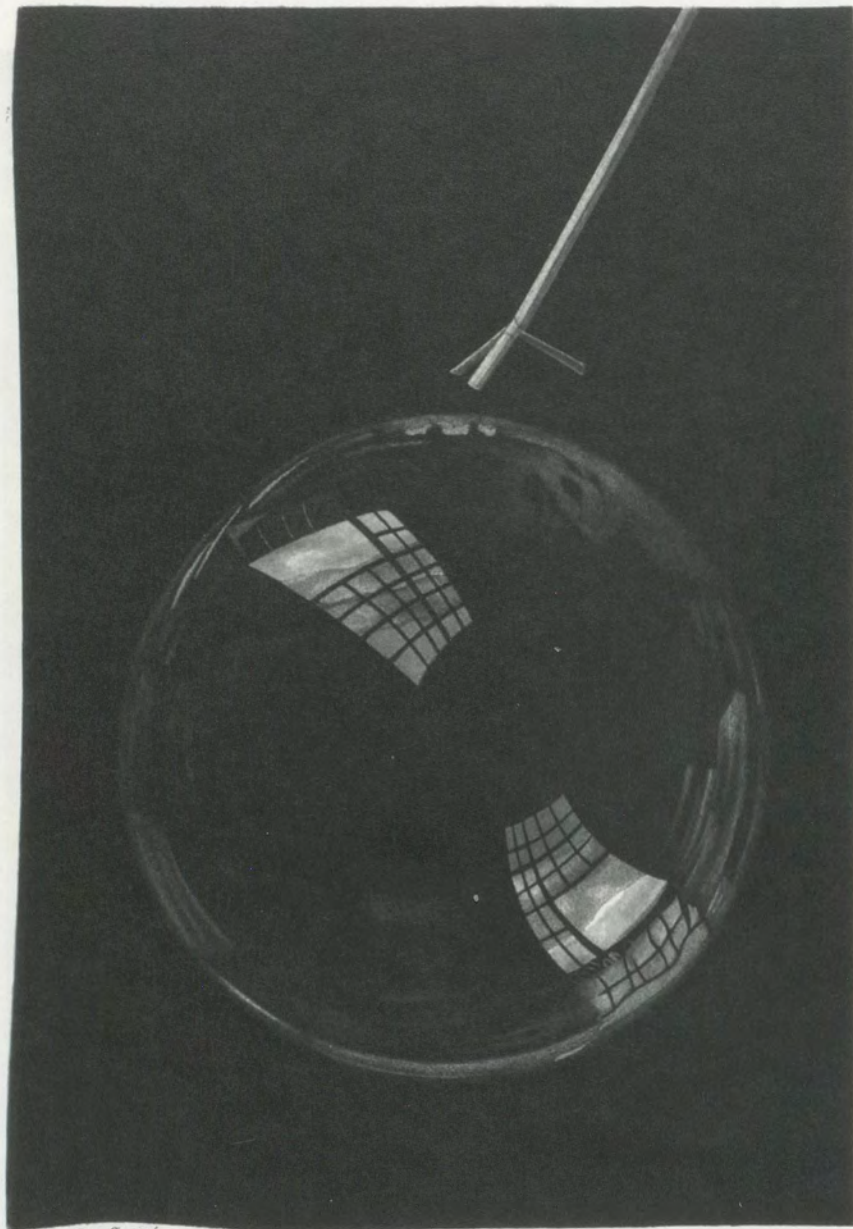


NICK
RELPH

INSERT FOR PARKETT 91







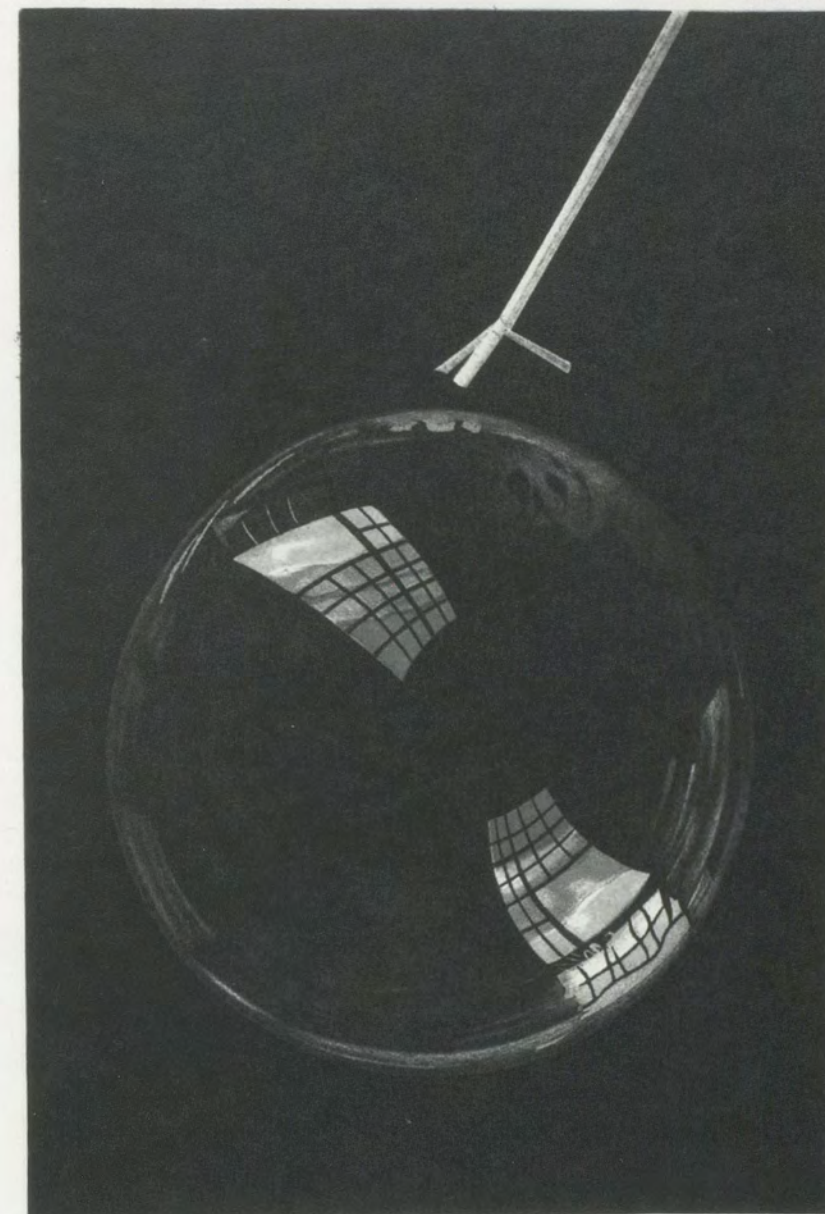
Blaise Despeffe pin.

R.H. Dugon sc.

LA BULLE DE SAVON

Phénomènes d'interférence

ANNEAUX COLORÉS DANS LES LAMES MINCES



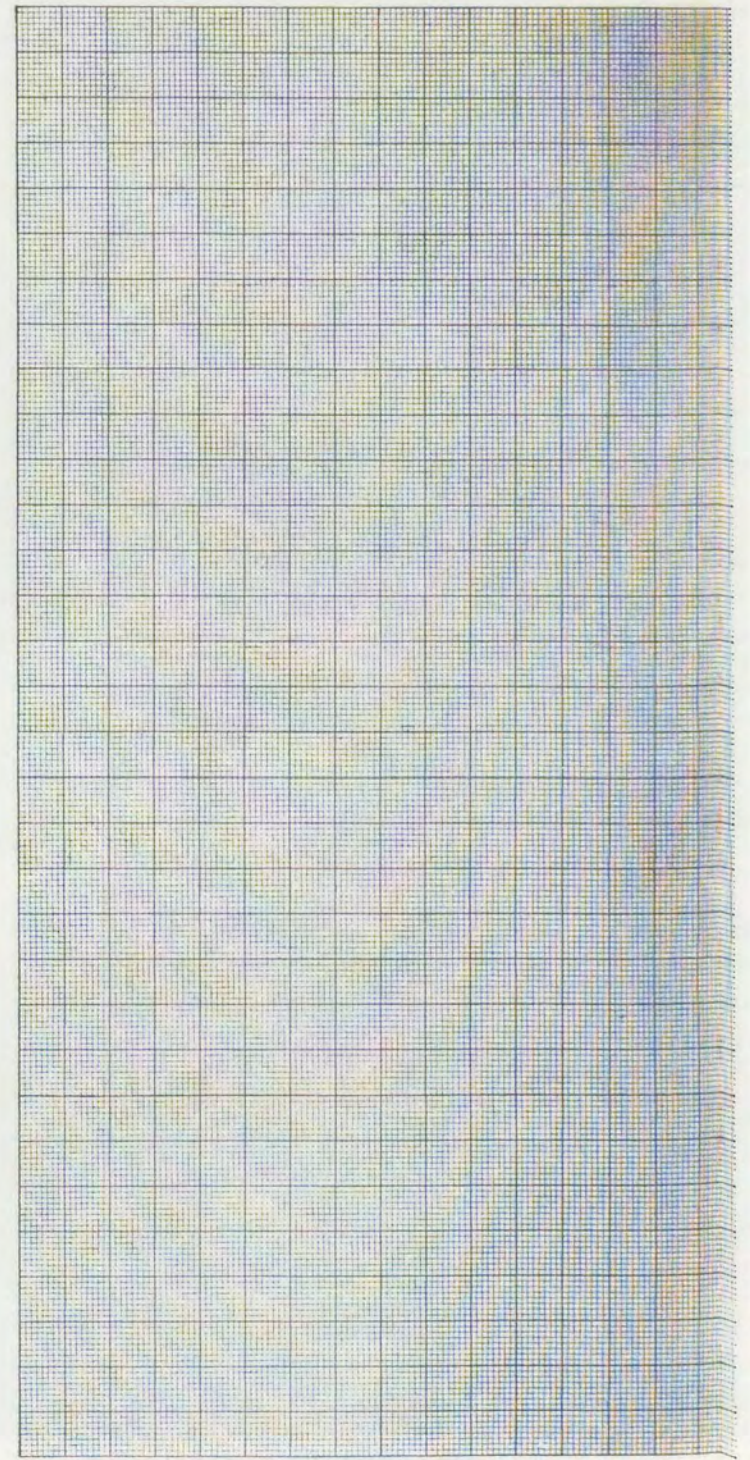
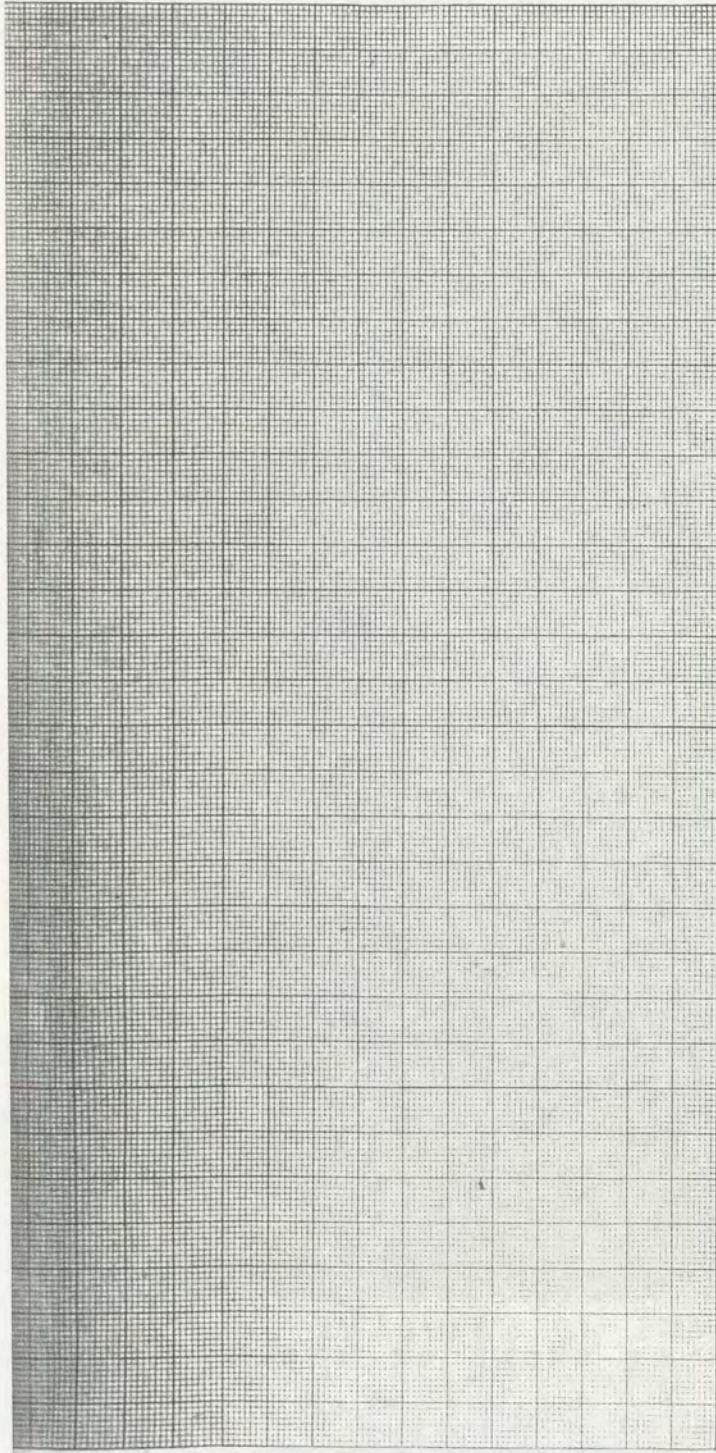
Blaise Despeffe pin.

R.H. Dugon sc.

LA BULLE DE SAVON

Phénomènes d'interférence

ANNEAUX COLORÉS DANS LES LAMES MINCES

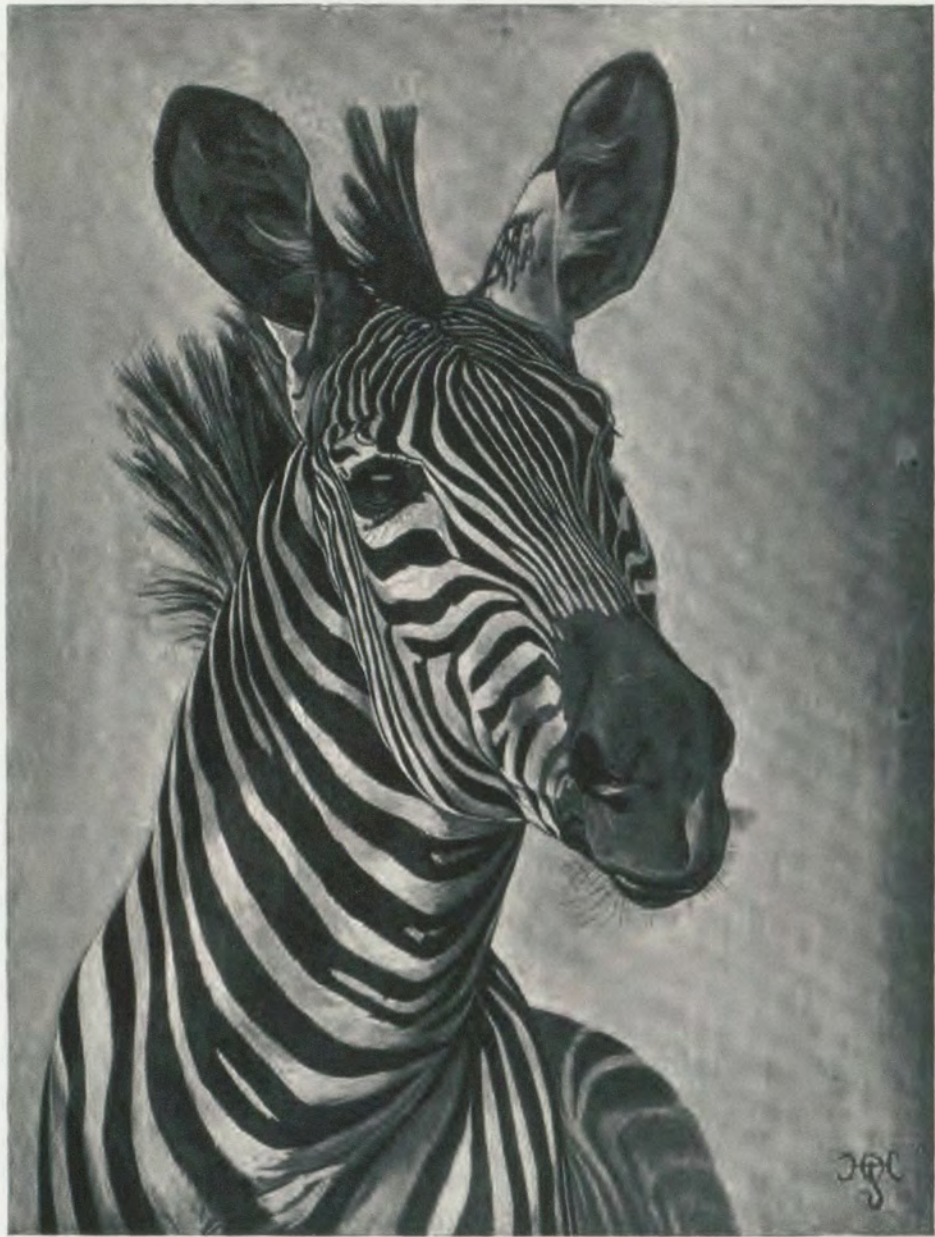




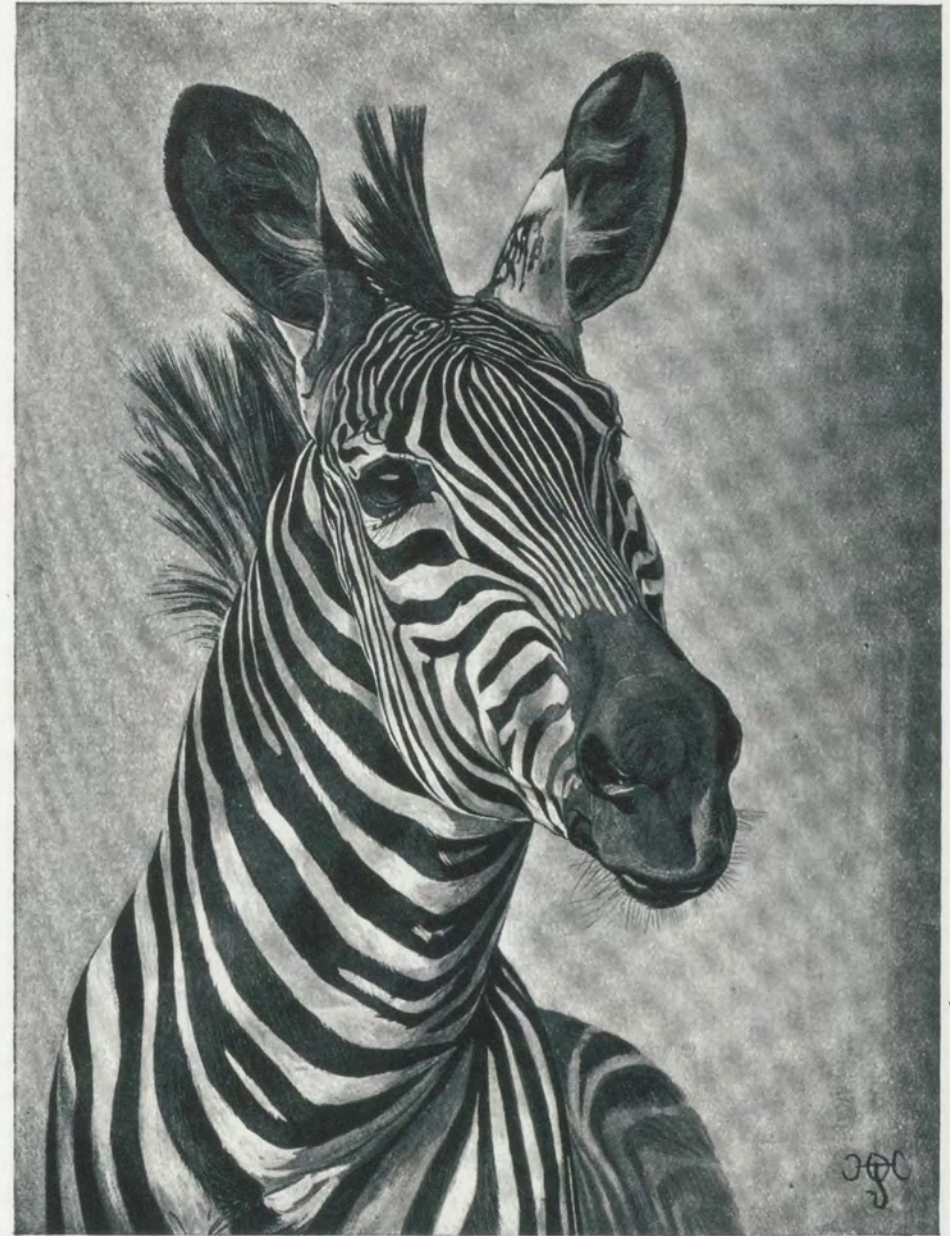
An example of the Zander process.
Reproduced from blocks kindly lent by the Norwich Trade Press.



An example of the Zander process.
Reproduced from blocks kindly lent by the Norwich Trade Press.



THE CENTRAL AFRICAN ZEBRA



THE CENTRAL AFRICAN ZEBRA



NICK RELPH, INSERT FOR PARKETT 91, 2012